

YEAR 2023

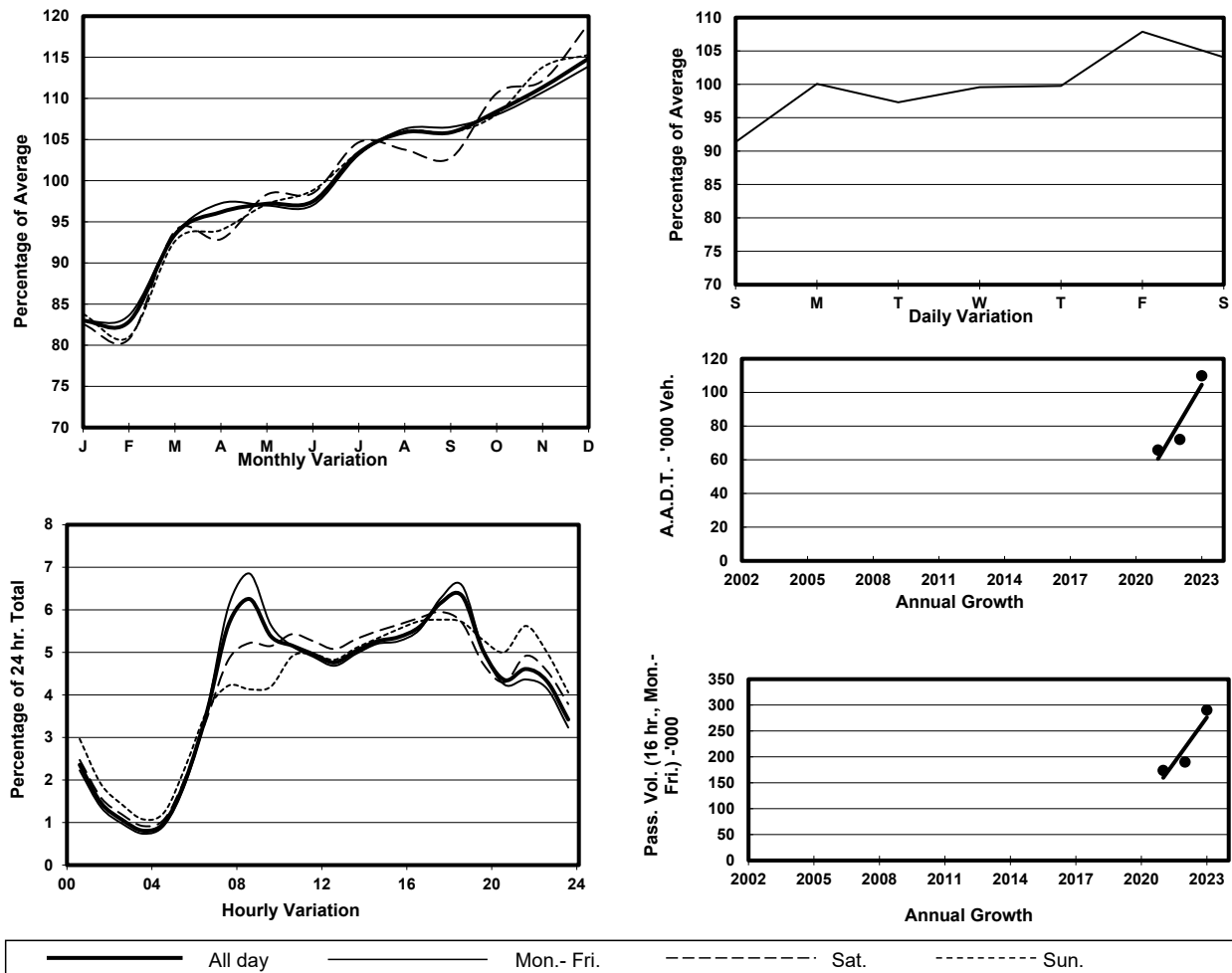
Location

Lantau External Cordon(Lantau Area Boundary)

Stations on Cordon/Screenline

5027 and 5042

## 1. TRAFFIC FLOW VARIATION AND GROWTH



## 2. TRAFFIC CHARACTERISTICS (BY DIRECTION)

Parameter	All - Day	Mon. - Fri.	Sat.	Sun.
<b>IN BOUND</b>				
A.A.D.T.	54390	55310	57420	48760
R 12 / 24 - %	67.2	68	66.8	62.8
R 16 / 24 - %	84.4	85.1	83.9	81.6
AM Peak Hour	0800-0900	0800-0900	0700-0800	0700-0800
One-way flow at AM peak hour	3940	4470	3390	2360
T - % (AM)	-	17	-	-
PM Peak Hour	1700-1800	1700-1800	1600-1700	1600-1700
One-way flow at PM peak hour	2880	2920	3130	2620
T - % (PM)	-	19.2	-	-
Prop.of commercial vehicles - 16 hr.	-	20.4	-	-
<b>OUT BOUND</b>				
A.A.D.T.	55430	56200	57690	51420
R 12 / 24 - %	64.7	66.2	63	58.1
R 16 / 24 - %	84	84.8	82.9	81.1
AM Peak Hour	0800-0900	0800-0900	0800-0900	0800-0900
One-way flow at AM peak hour	2920	3170	2730	2020
T - % (AM)	-	21.1	-	-
PM Peak Hour	1800-1900	1800-1900	1700-1800	1800-1900
One-way flow at PM peak hour	4170	4480	3780	3340
T - % (PM)	-	14.5	-	-
Prop.of commercial vehicles - 16 hr.	-	19.9	-	-

## 3. OTHER INFORMATION AND COMMENT

**Lantau External Cordon**  
**Year 2023**

**4. Vehicle classification and occupancy - Monday to Friday**

Time		Class of vehicle									
		Motor Cycle	Private Car	Taxi	Private LB	PLB	Goods veh.		Non Fr. Bus	Fr. Bus	
							Light	M & H		SD	DD
0700-0800	Pro	4.8	40.1	28.8	0.3	0.0	10.1	10.0	2.6	0.1	3.3
	Ocp	1.0	1.4	2.0	6.0	0.0	1.3	1.1	25.8	1.0	56.1
0800-0900 Peak Hour	Pro	3.1	51.3	19.5	0.3	0.0	7.2	12.6	3.2	0.0	2.9
	Ocp	1.1	1.4	2.0	1.8	0.0	1.4	1.1	16.9	0.0	50.1
0900-1000	Pro	1.4	43.7	19.3	0.0	0.0	13.6	16.1	2.4	0.0	3.4
	Ocp	1.0	1.3	2.1	0.0	0.0	1.3	1.1	12.2	0.0	34.8
1000-1100	Pro	1.2	38.4	21.3	0.3	0.0	14.9	18.4	2.3	0.0	3.1
	Ocp	1.0	1.4	1.9	1.8	0.0	1.3	1.1	8.6	0.0	29.7
1100-1200	Pro	1.0	40.2	21.5	0.2	0.0	14.3	17.5	1.6	0.0	3.6
	Ocp	1.1	1.4	2.2	2.0	0.0	1.4	1.1	4.9	0.0	27.3
1200-1300	Pro	0.6	39.1	21.4	0.2	0.0	13.9	19.8	1.3	0.0	3.8
	Ocp	1.0	1.5	2.0	1.3	0.0	1.4	1.1	5.7	0.0	29.0
1300-1400	Pro	1.2	39.5	19.0	0.3	0.0	14.8	19.9	1.6	0.0	3.6
	Ocp	1.0	1.4	2.3	2.0	0.0	1.3	1.2	9.4	0.0	32.6
1400-1500	Pro	1.7	39.1	20.6	0.4	0.0	12.7	19.5	2.8	0.0	3.2
	Ocp	1.1	1.5	2.3	1.5	0.0	1.3	1.1	10.0	0.0	32.1
1500-1600	Pro	0.6	39.9	22.6	0.3	0.0	13.3	17.6	2.4	0.1	3.1
	Ocp	1.3	1.4	2.2	2.5	0.0	1.4	1.1	14.6	2.0	32.6
1600-1700	Pro	1.5	39.7	18.0	0.4	0.0	13.3	19.1	4.7	0.0	3.4
	Ocp	1.0	1.5	2.3	2.2	0.0	1.4	1.1	5.4	0.0	37.8
1700-1800	Pro	5.6	43.0	19.0	0.6	0.0	12.6	12.5	3.0	0.0	3.7
	Ocp	1.1	1.5	2.1	1.2	0.0	1.3	1.1	10.6	0.0	53.6
1800-1900	Pro	1.9	59.6	19.0	0.0	0.0	5.6	7.0	4.0	0.0	3.0
	Ocp	1.1	1.4	2.1	0.0	0.0	1.2	1.1	16.7	0.0	58.0
1900-2000	Pro	1.3	52.1	24.6	0.0	0.0	6.9	8.2	3.2	0.0	3.7
	Ocp	1.1	1.3	2.0	0.0	0.0	1.3	1.1	8.5	0.0	39.0
2000-2100	Pro	1.0	51.9	27.1	0.2	0.0	5.7	8.0	2.5	0.0	3.6
	Ocp	1.1	1.4	2.1	1.5	0.0	1.2	1.1	14.0	0.0	34.8
2100-2200	Pro	1.1	53.9	27.5	0.0	0.0	4.7	8.1	0.9	0.0	3.8
	Ocp	1.2	1.8	2.2	0.0	0.0	1.2	1.1	10.6	0.0	35.7
2200-2300	Pro	1.4	48.3	31.1	0.0	0.0	4.7	9.4	1.1	0.0	3.9
	Ocp	1.1	1.4	2.2	0.0	0.0	1.2	1.0	2.4	0.0	28.2
16 hours	Pro	2.0	45.1	22.2	0.2	0.0	10.6	13.9	2.6	0.1	3.4
	Ocp	1.1	1.4	2.1	2.1	0.0	1.3	1.1	12.1	1.4	39.0

**Legend: Pro.** Proportion of vehicles in % (Sum may not add up to 100% due to figure rounding)\*

**Ocp.** Average occupancy of vehicles including both driver and passengers\*

**M&H** Medium and Heavy

\* All traffic data are collected from combined bounds